

# Instructions for Running Reports for your Workman's Compensation Audit

## Creating a Payroll Summary Report

Go to Reports, Employees & Payroll, Payroll Summary Report

The screenshot shows the QuickBooks Premier interface. The 'Reports' menu is open, and the path 'Employees & Payroll' > 'Payroll Summary' is highlighted. A red arrow points to the 'Payroll Summary' option. The background shows the main dashboard with various business activity icons.

**Account Balances**

Name	Balance
1110 · Company Che...	95,561.85
1120 · Company Savi...	280,025.00
1140 · Petty Cash Ac...	131.10
2050 · Mastercard Pa...	211.83

- Learn About Services**
- [NEW Payroll Options](#)
  - [Accept credit cards](#)
  - [Order checks and forms](#)
  - [Other services...](#)



Created by The Wren Group, Inc.  
Certified QuickBooks® Pro Advisors  
770-554-5414  
[www.thewrengroupinc.com](http://www.thewrengroupinc.com)

The first step is to make the columns a little smaller. If you left-click on the dot between Hours and Rate, hold down the mouse button and drag a little to the left.....

Sample Quality-Built Construction - QuickBooks Premier: Accountant Edition 2006 - [Payroll Summary]

File Edit View Lists Accountant Company Customers Vendors Employees Banking Reports Window Help

Home Customer Center Vendor Center Employee Center Report Center Invoice Item MemTx Check Bill Reg Acct Rmnd Find Backup Support Feedback Services Payroll Credit Cards

Modify Report... Memorize... Print... E-mail Export... Hide Header Refresh

Dates This Calendar Quarter-to-date From 10/01/2007 To 12/15/2007 Columns Employee

12:45 PM  
12/15/07

### Quality-Built Construction Payroll Summary October 1 through December 15, 2007

Employee Wages, Taxes and Adjustments	Mitchell, Clark			Pepper, Chris			Prentice, Adelaide			Rand, Jen
	Rate	Oct 1 - Dec 15, 07	Hours	Rate	Oct 1 - Dec 15, 07	Hours	Rate	Oct 1 - Dec 15, 07	Hours	
<b>Gross Pay</b>										
1027 - Design		0.00			0.00	50	15.00	750.00		
5188 - Plumbing	24	510.00	24	21.00	504.00			0.00		
5190 - Electrical	24	510.00	24	23.00	552.00			0.00		
5475 - Painting	32	680.00	32	22.00	704.00			0.00		
5646 - Carpentry	320	6,800.00	320	22.00	7,040.00			0.00		
9891 - Office		0.00			0.00			0.00		
Officer's Labor		0.00			0.00			0.00		
<b>Total Gross Pay</b>	<b>400</b>	<b>8,500.00</b>	<b>400</b>	<b>8,800.00</b>	<b>50</b>	<b>750.00</b>				
<b>Adjusted Gross Pay</b>	<b>400</b>	<b>8,500.00</b>	<b>400</b>	<b>8,800.00</b>	<b>50</b>	<b>750.00</b>				
<b>Taxes Withheld</b>										
Federal Withholding		0.00			0.00			0.00		
Medicare Employee		0.00			0.00			0.00		
Social Security Employee		0.00			0.00			0.00		
CA - Withholding		0.00			0.00			0.00		
CA - Disability Employee		0.00			0.00			0.00		
<b>Total Taxes Withheld</b>		<b>0.00</b>			<b>0.00</b>			<b>0.00</b>		
<b>Deductions from Net Pay</b>										
Medical deduction		-250.00			0.00			0.00		
<b>Total Deductions from Net Pay</b>		<b>-250.00</b>			<b>0.00</b>			<b>0.00</b>		
<b>Net Pay</b>	<b>400</b>	<b>8,250.00</b>	<b>400</b>	<b>8,800.00</b>	<b>50</b>	<b>750.00</b>				
<b>Employer Taxes and Contributions</b>										
Federal Unemployment		0.00			0.00			0.00		
Medicare Company		0.00			0.00			0.00		
Social Security Company		0.00			0.00			0.00		
CA - Unemployment Company		0.00			0.00			0.00		

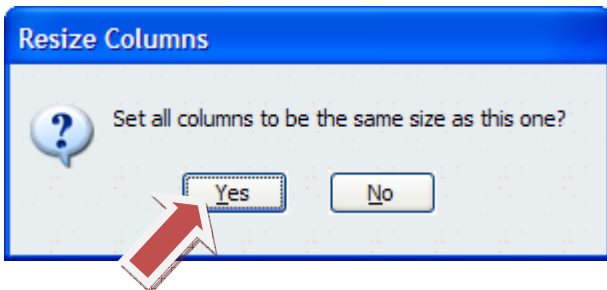


You'll get a dotted vertical line that you can drag and make the column smaller.

Quality-Built Construction  
Payroll Summary  
October 1 through December 15, 2007

	Mitchell, Clark			Pepper, Chris			Prentice, Adelaide			Rand,
	Hours	Rate	Oct 1 - Dec 15, 07	Hours	Rate	Oct 1 - Dec 15, 07	Hours	Rate	Oct 1 - Dec 15, 07	
<b>Employee Wages, Taxes and Adjustments</b>										
Gross Pay										
1027 - Design			0.00			0.00	50	15.00		750.00
5188 - Plumbing	24	21.25	510.00	24	21.00	504.00				0.00
5190 - Electrical	24	21.25	510.00	24	23.00	552.00				0.00
5475 - Painting	32	21.25	680.00	32	22.00	704.00				0.00
5646 - Carpentry	320	21.25	6,800.00	320	22.00	7,040.00				0.00
9891 - Office			0.00			0.00				0.00
Officer's Labor			0.00			0.00				0.00
<b>Total Gross Pay</b>	<b>400</b>		<b>8,500.00</b>	<b>400</b>		<b>8,800.00</b>	<b>50</b>			<b>750.00</b>
<b>Adjusted Gross Pay</b>	<b>400</b>		<b>8,500.00</b>	<b>400</b>		<b>8,800.00</b>	<b>50</b>			<b>750.00</b>
<b>Taxes Withheld</b>										
Federal Withholding			0.00			0.00				0.00
Medicare Employee			0.00			0.00				0.00
Social Security Employee			0.00			0.00				0.00
CA - Withholding			0.00			0.00				0.00
CA - Disability Employee			0.00			0.00				0.00
<b>Total Taxes Withheld</b>			<b>0.00</b>			<b>0.00</b>				<b>0.00</b>
<b>Deductions from Net Pay</b>										
Medical deduction			-250.00			-0.00				0.00
<b>Total Deductions from Net Pay</b>			<b>-250.00</b>			<b>-0.00</b>				<b>0.00</b>
<b>Net Pay</b>	<b>400</b>		<b>8,250.00</b>	<b>400</b>		<b>8,800.00</b>	<b>50</b>			<b>750.00</b>
<b>Employer Taxes and Contributions</b>										
Federal Unemployment			0.00			0.00				0.00
Medicare Company			0.00			0.00				0.00
Social Security Company			0.00			0.00				0.00
CA - Unemployment Company			0.00			0.00				0.00

QuickBooks® asks you if you want to make the columns to be the same size:



Say Yes.



Created by The Wren Group, Inc.  
 Certified QuickBooks® Pro Advisors  
 770-554-5414  
[www.thewrengroupinc.com](http://www.thewrengroupinc.com)

Now the report is much more manageable.

Sample Quality-Built Construction - QuickBooks Premier: Accountant Edition 2006 - [Payroll Summary]

12:45 PM  
12/15/07

### Quality-Built Construction Payroll Summary October 1 through December 15, 2007

	Mitchell, Clark			Pepper, Chris			Prentice, Adelaide			Rand, Jenn			Teichman, Tim			Yoo, Young-Kyu		
	Hours	Rate	Oct 1 ...	Hours	Rate	Oct 1 ...	Hours	Rate	Oct 1 ...	Hours	Rate	Oct 1 ...	Hours	Rate	Oct 1 ...	Hours	Rate	Oct 1 ...
<b>Employee Wages, Taxes and Adjustments</b>																		
<b>Gross Pay</b>																		
1027 - Design			0.00			0.00	50	15.00	750.00			0.00			0.00			
5188 - Plumbing	24	21.25	510.00	24	21.00	504.00			0.00			8	22.00	176.00				
5190 - Electrical	24	21.25	510.00	24	23.00	552.00			0.00			12	22.00	264.00				
5475 - Painting	32	21.25	680.00	32	22.00	704.00			0.00			42	18.75	787.50				
5646 - Carpentry	320	21.25	6,800.00	320	22.00	7,040.00			0.00			338	22.00	7,436.00				
9891 - Office			0.00			0.00			0.00					0.00		100	15.00	1,500.00
Officer's Labor			0.00			0.00			0.00	290	25.00	7,250.00			0.00			
<b>Total Gross Pay</b>	<b>400</b>		<b>8,500.00</b>	<b>400</b>		<b>8,800.00</b>	<b>50</b>		<b>750.00</b>	<b>290</b>		<b>7,250.00</b>	<b>400</b>		<b>8,663.50</b>	<b>100</b>		<b>1,500.00</b>
<b>Adjusted Gross Pay</b>	<b>400</b>		<b>8,500.00</b>	<b>400</b>		<b>8,800.00</b>	<b>50</b>		<b>750.00</b>	<b>290</b>		<b>7,250.00</b>	<b>400</b>		<b>8,663.50</b>	<b>100</b>		<b>1,500.00</b>
<b>Taxes Withheld</b>																		
Federal Withholding			0.00			0.00			0.00			0.00			0.00			
Medicare Employee			0.00			0.00			0.00			0.00			0.00			
Social Security Employee			0.00			0.00			0.00			0.00			0.00			
CA - Withholding			0.00			0.00			0.00			0.00			0.00			
CA - Disability Employee			0.00			0.00			0.00			0.00			0.00			
<b>Total Taxes Withheld</b>			<b>0.00</b>			<b>0.00</b>			<b>0.00</b>			<b>0.00</b>			<b>0.00</b>			<b>0.00</b>
<b>Deductions from Net Pay</b>																		
Medical deduction			-250.00			0.00			0.00			0.00			-250.00			
<b>Total Deductions from Net Pay</b>			<b>-250.00</b>			<b>0.00</b>			<b>0.00</b>			<b>0.00</b>			<b>-250.00</b>			
<b>Net Pay</b>	<b>400</b>		<b>8,250.00</b>	<b>400</b>		<b>8,800.00</b>	<b>50</b>		<b>750.00</b>	<b>290</b>		<b>7,250.00</b>	<b>400</b>		<b>8,413.50</b>	<b>100</b>		<b>1,500.00</b>
<b>Employer Taxes and Contributions</b>																		
Federal Unemployment			0.00			0.00			0.00			0.00			0.00			
Medicare Company			0.00			0.00			0.00			0.00			0.00			
Social Security Company			0.00			0.00			0.00			0.00			0.00			
CA - Unemployment Company			0.00			0.00			0.00			0.00			0.00			



Created by The Wren Group, Inc.  
 Certified QuickBooks® Pro Advisors  
 770-554-5414  
[www.thewrengroupinc.com](http://www.thewrengroupinc.com)

As you scroll over, you'll see the totals of all employees:

Sample Quality-Built Construction - QuickBooks Premier: Accountant Edition 2006 - [Payroll Summary]

12:45 PM  
12/15/07

### Quality-Built Construction Payroll Summary October 1 through December 15, 2007

	Pepper, Chris		Prentice, Adelaide		Rand, Jenn		Teichman, Tim		Yoo, Young-Kyu		TOTAL				
	Rate	Oct 1 ...	Hours	Rate	Oct 1 ...	Hours	Rate	Oct 1 ...	Hours	Rate	Oct 1 ...	Hours			
<b>Employee Wages, Taxes and Adjustments</b>															
<b>Gross Pay</b>															
1027 - Design		0.00	50	15.00	750.00		0.00					50	750.00		
5188 - Plumbing	21.00	504.00			0.00		0.00	8	22.00	176.00		56	1,190.00		
5190 - Electrical	23.00	552.00			0.00		0.00	12	22.00	264.00		60	1,326.00		
5475 - Painting	22.00	704.00			0.00		0.00	42	18.75	787.50		106	2,171.50		
5646 - Carpentry	22.00	7,040.00			0.00		0.00	338	22.00	7,436.00		978	21,276.00		
9891 - Office		0.00			0.00		0.00			0.00	100	15.00	1,500.00		
Officer's Labor		0.00			0.00	290	25.00	7,250.00		0.00		290	7,250.00		
<b>Total Gross Pay</b>	<b>8,800.00</b>		<b>50</b>		<b>750.00</b>	<b>290</b>		<b>7,250.00</b>	<b>400</b>		<b>8,663.50</b>	<b>100</b>	<b>1,500.00</b>	<b>1,640</b>	<b>35,463.50</b>
<b>Adjusted Gross Pay</b>	<b>8,800.00</b>		<b>50</b>		<b>750.00</b>	<b>290</b>		<b>7,250.00</b>	<b>400</b>		<b>8,663.50</b>	<b>100</b>	<b>1,500.00</b>	<b>1,640</b>	<b>35,463.50</b>
<b>Taxes Withheld</b>															
Federal Withholding		0.00			0.00		0.00			0.00		0.00		0.00	
Medicare Employee		0.00			0.00		0.00			0.00		0.00		0.00	
Social Security Employee		0.00			0.00		0.00			0.00		0.00		0.00	
CA - Withholding		0.00			0.00		0.00			0.00		0.00		0.00	
CA - Disability Employee		0.00			0.00		0.00			0.00		0.00		0.00	
<b>Total Taxes Withheld</b>		<b>0.00</b>			<b>0.00</b>		<b>0.00</b>			<b>0.00</b>		<b>0.00</b>		<b>0.00</b>	
<b>Deductions from Net Pay</b>															
Medical deduction		0.00			0.00		0.00			-250.00		0.00		-500.00	
<b>Total Deductions from Net Pay</b>		<b>0.00</b>			<b>0.00</b>		<b>0.00</b>			<b>-250.00</b>		<b>0.00</b>		<b>-500.00</b>	
<b>Net Pay</b>	<b>8,800.00</b>		<b>50</b>		<b>750.00</b>	<b>290</b>		<b>7,250.00</b>	<b>400</b>		<b>8,413.50</b>	<b>100</b>	<b>1,500.00</b>	<b>1,640</b>	<b>34,963.50</b>
<b>Employer Taxes and Contributions</b>															
Federal Unemployment		0.00			0.00		0.00			0.00		0.00		0.00	
Medicare Company		0.00			0.00		0.00			0.00		0.00		0.00	
Social Security Company		0.00			0.00		0.00			0.00		0.00		0.00	
CA - Unemployment Company		0.00			0.00		0.00			0.00		0.00		0.00	



Created by The Wren Group, Inc.  
 Certified QuickBooks® Pro Advisors  
 770-554-5414  
[www.thewrengroupinc.com](http://www.thewrengroupinc.com)

From this point you can print the report. Click the Print button:

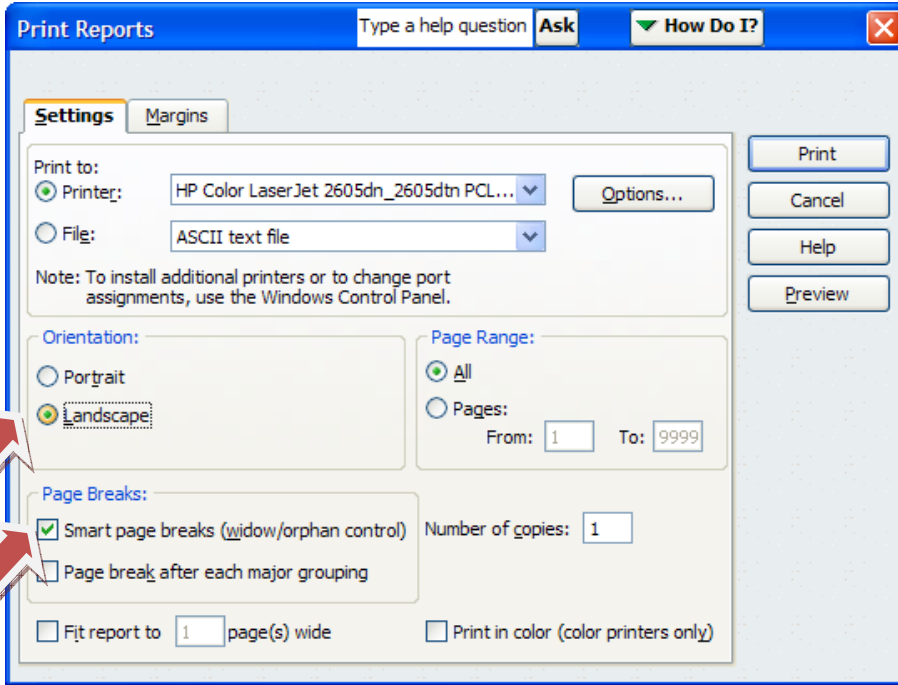
**Quality-Built Construction**  
**Payroll Summary**  
 October 1 through December 15, 2007

	Pepper, Chris		Prentice, Adelaide		Rand, Jenn		Teichman, Tim		Yoo, Young-Kyu		TOTAL		
	Rate	Oct 1 ...	Hours	Rate	Oct 1 ...	Hours	Rate	Oct 1 ...	Hours	Rate	Oct 1 ...	Hours	
<b>Employee Wages, Taxes and Adjustments</b>													
<b>Gross Pay</b>													
1027 - Design			50	15.00	750.00							50	
5188 - Plumbing	21.00	504.00			0.00		8	22.00	176.00			56	
5190 - Electrical	23.00	552.00			0.00		12	22.00	264.00			60	
5475 - Painting	22.00	704.00			0.00		42	18.75	787.50			106	
5646 - Carpentry	22.00	7,040.00			0.00		338	22.00	7,436.00			978	
9891 - Office		0.00			0.00				0.00	100	15.00	100	
Officer's Labor		0.00			0.00	290	25.00	7,250.00				290	
<b>Total Gross Pay</b>	<b>8,800.00</b>		<b>50</b>		<b>750.00</b>	<b>290</b>		<b>7,250.00</b>	<b>400</b>	<b>8,663.50</b>	<b>100</b>	<b>1,500.00</b>	<b>1,640</b>
<b>Adjusted Gross Pay</b>	<b>8,800.00</b>		<b>50</b>		<b>750.00</b>	<b>290</b>		<b>7,250.00</b>	<b>400</b>	<b>8,663.50</b>	<b>100</b>	<b>1,500.00</b>	<b>1,640</b>
<b>Taxes Withheld</b>													
Federal Withholding		0.00			0.00				0.00			0.00	
Medicare Employee		0.00			0.00				0.00			0.00	
Social Security Employee		0.00			0.00				0.00			0.00	
CA - Withholding		0.00			0.00				0.00			0.00	
CA - Disability Employee		0.00			0.00				0.00			0.00	
<b>Total Taxes Withheld</b>		<b>0.00</b>			<b>0.00</b>				<b>0.00</b>			<b>0.00</b>	
<b>Deductions from Net Pay</b>													
Medical deduction		0.00			0.00				-250.00			0.00	
<b>Total Deductions from Net Pay</b>		<b>0.00</b>			<b>0.00</b>				<b>-250.00</b>			<b>0.00</b>	
<b>Net Pay</b>	<b>8,800.00</b>		<b>50</b>		<b>750.00</b>	<b>290</b>		<b>7,250.00</b>	<b>400</b>	<b>8,413.50</b>	<b>100</b>	<b>1,500.00</b>	<b>1,640</b>
<b>Employer Taxes and Contributions</b>													
Federal Unemployment		0.00			0.00				0.00			0.00	
Medicare Company		0.00			0.00				0.00			0.00	
Social Security Company		0.00			0.00				0.00			0.00	
CA - Unemployment Company		0.00			0.00				0.00			0.00	

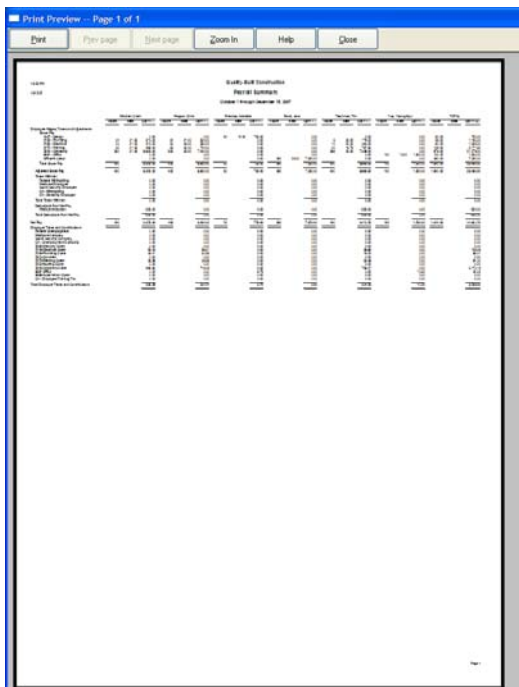


Created by The Wren Group, Inc.  
 Certified QuickBooks® Pro Advisors  
 770-554-5414  
[www.thewrengroupinc.com](http://www.thewrengroupinc.com)

Click the Smart Page Breaks option (noted below). This will keep important columns from breaking over two pages. Also, click landscape instead of portrait.



Make sure that the Fit Report to One page wide is NOT checked. Otherwise the entire report will print very small on one page, like this:



Created by The Wren Group, Inc.  
Certified QuickBooks® Pro Advisors  
770-554-5414  
[www.thewrengroupinc.com](http://www.thewrengroupinc.com)

Always preview this kind of report by hitting the preview button to make sure the report is readable.

Print Preview -- Page 1 of 2

Print Prev page Next page Zoom In Help Close

12:51 PM  
12/15/07

### Quality-Built Construction Payroll Summary October 1 through December 15, 2007

	Mitchell, Clark			Pepper, Chrs			Prentice, Adelaide			Rand, Jenn		
	Hours	Rate	Oct 1 - ...	Hours	Rate	Oct 1 - ...	Hours	Rate	Oct 1 - ...	Hours	Rate	Oct 1 - ...
<b>Employee Wages, Taxes and Adjustments</b>												
<b>Gross Pay</b>												
1027 - Design			0.00			0.00	50	15.00	750.00			0.00
5188 - Plumbing	24	21.25	510.00	24	21.00	504.00			0.00			0.00
5190 - Electrical	24	21.25	510.00	24	23.00	552.00			0.00			0.00
5475 - Painting	32	21.25	680.00	32	22.00	704.00			0.00			0.00
5646 - Carpentry	320	21.25	6,800.00	320	22.00	7,040.00			0.00			0.00
9891 - Office			0.00			0.00			0.00	290	25.00	7,250.00
Officer's Labor			0.00			0.00			0.00			0.00
<b>Total Gross Pay</b>	<b>400</b>		<b>8,500.00</b>	<b>400</b>		<b>8,800.00</b>	<b>50</b>		<b>750.00</b>	<b>290</b>		<b>7,250.00</b>
<b>Adjusted Gross Pay</b>	<b>400</b>		<b>8,500.00</b>	<b>400</b>		<b>8,800.00</b>	<b>50</b>		<b>750.00</b>	<b>290</b>		<b>7,250.00</b>
<b>Taxes Withheld</b>												
Federal Withholding			0.00			0.00			0.00			0.00
Medicare Employee			0.00			0.00			0.00			0.00
Social Security Employee			0.00			0.00			0.00			0.00
CA - Withholding			0.00			0.00			0.00			0.00
CA - Disability Employee			0.00			0.00			0.00			0.00
<b>Total Taxes Withheld</b>			<b>0.00</b>			<b>0.00</b>			<b>0.00</b>			<b>0.00</b>
<b>Deductions from Net Pay</b>												
Medical deduction			-250.00			0.00			0.00			0.00
<b>Total Deductions from Net Pay</b>			<b>-250.00</b>			<b>0.00</b>			<b>0.00</b>			<b>0.00</b>
<b>Net Pay</b>	<b>400</b>		<b>8,250.00</b>	<b>400</b>		<b>8,800.00</b>	<b>50</b>		<b>750.00</b>	<b>290</b>		<b>7,250.00</b>
<b>Employer Taxes and Contributions</b>												
Federal Unemployment			0.00			0.00			0.00			0.00
Medicare Company			0.00			0.00			0.00			0.00
Social Security Company			0.00			0.00			0.00			0.00
CA - Unemployment Company			0.00			0.00			0.00			0.00
5028-Masonry Costs			0.00			0.00			0.00			0.00
5140-Electrical Costs			52.02			56.31			0.00			0.00
5188-Plumbing Costs			46.41			30.58			0.00			0.00
5213-Concrete			0.00			0.00			0.00			0.00
5475-Painting Costs			28.56			29.56			0.00			0.00
5553-Roofing Costs			0.00			0.00			0.00			0.00
5646-Carpentry Costs			693.60			718.09			0.00			0.00
9891 Office			0.00			0.00			6.75			0.00
9899-Supervision Costs			0.00			0.00			0.00			0.00
CA - Employee Training Tax			0.00			0.00			0.00			0.00
<b>Total Employer Taxes and Contributions</b>			<b>820.59</b>			<b>834.54</b>			<b>6.75</b>			<b>0.00</b>

Page 1

start | Specialty Mouse Pad... | Windows Media Player | The Wren Group, Inc... | Inbox - Microsoft Out... | Website reports - Me... | Microsoft ActiveSync | Payroll Summary - Mic... | Sample Quality-Built ... | 1:51 PM

Print the report and you're done.



Created by The Wren Group, Inc.  
 Certified QuickBooks® Pro Advisors  
 770-554-5414  
[www.thewrengroupinc.com](http://www.thewrengroupinc.com)